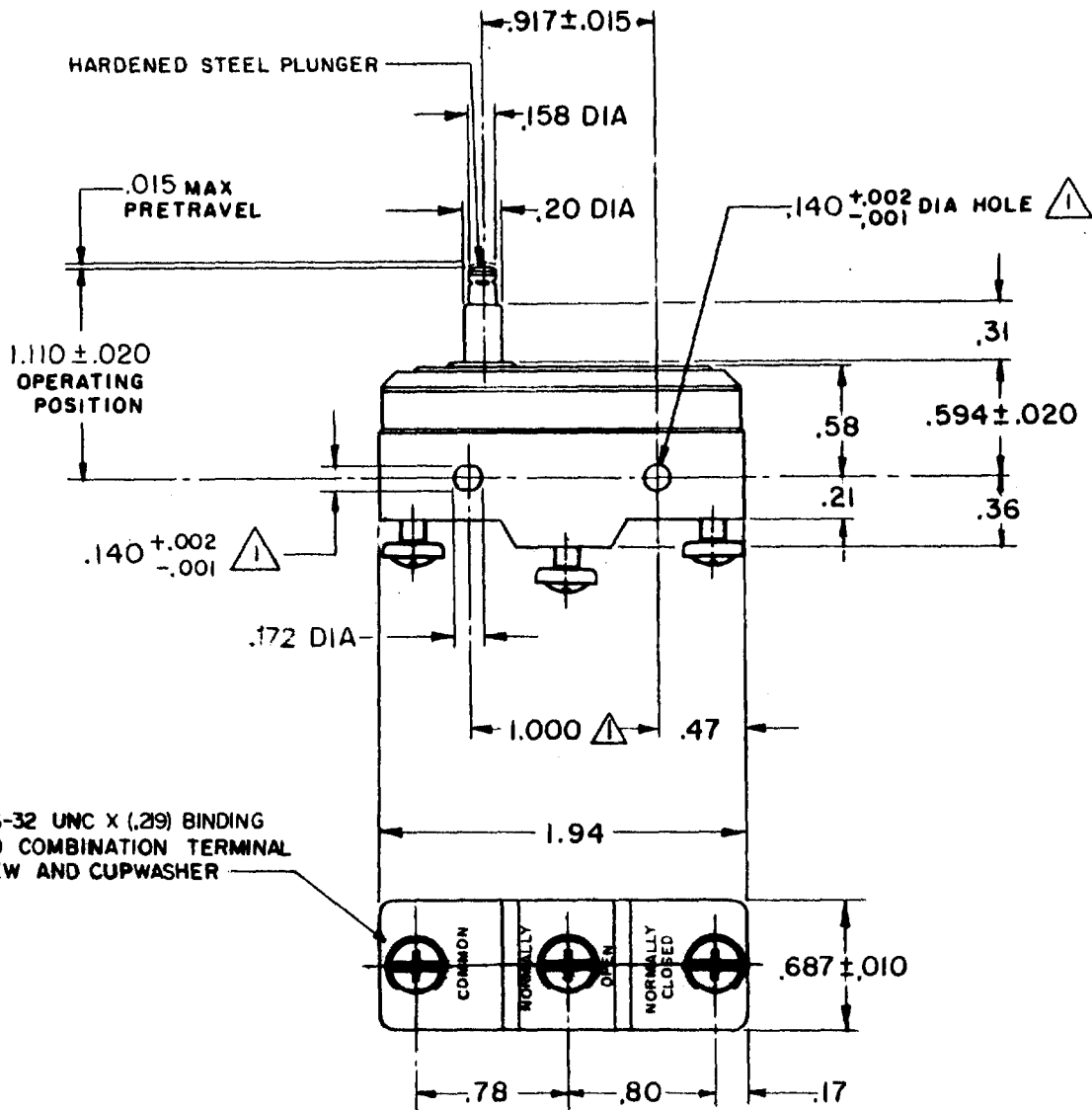


**BZ-2RS-A2**  
 PAGE 1 OF 1  
**M**  
 DRAWING NUMBER  
 ISSUE 7  
 REVISIONS  
 A CO17410 GCH 2 APRIL 63  
 B CO44156 SJS 20 APR 78  
 C CO-73287-B DHD 19 MAY 93  
 D CO-77589 KDR 29 MAR 94  
 E CO93346 DLT 11 SEP 98  
 CHECK U.S.D 16 APR 63  
 FORMTEK FO-50378  
 DRAWN GCH 2 APRIL 63  
 REPLACES  
 RELEASE NO.  
 CHECK



3X 6-32 UNC X (.29) BINDING HEAD COMBINATION TERMINAL SCREW AND CUPWASHER

NOTE  
 ▲ MOUNTING HOLES WILL ACCEPT PINS OR SCREWS OF .139 MAX DIA ON 1.000 ± .002 CENTERS.

THIS DRAWING COVERS A PROPRIETARY ITEM AND IS THE PROPERTY OF MICRO SWITCH, A DIVISION OF MINNEAPOLIS-HONEYWELL REGULATOR CO. THIS DRAWING IS NOT TO BE COPIED OR USED WITHOUT THE APPROVAL OF MICRO SWITCH.

CHARACTERISTICS	ELECTRICAL DATA	SCALE FULL
OPERATING FORCE ----- 9 - 13 OZ	CONTACT ARRANGEMENT S P D T	DO NOT SCALE PRINT
RELEASE FORCE ----- 4 OZ MIN	UL LISTED-FILE E12252 CODE 196 15A-125, 250 OR 480 VAC 1/8 HP-125 VAC; 1/4 HP-250 VAC 1/2 A-125 VDC; 1/4 A-250 VDC	UNLESS OTHERWISE NOTED DIMENSIONS ARE IN INCHES <b>TOLERANCES ARE:</b>
DIFFERENTIAL TRAVEL ---- .0004 - .0020	L288 L299 L306 16A 250V ~ T85 5E4	ONE PLACE (.0) ±.030 TWO PLACE (.00) ±.015 THREE PLACE (.000) ±.005 ANGLES ±
OVERTRAVEL ----- .060 MIN		WEIGHT .063 LB